

Hawke's Bay



FUNDING

NGĀ TUKUNGA PŪTEA Te Matau-a-Māui

Funding Roadshow

Welcome

Malcolm Dixon

Councillor

Hastings-Havelock North Ward

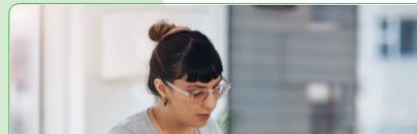
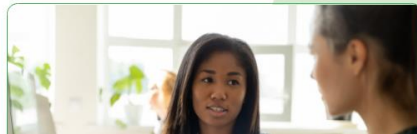
Chair Civic and Administration Subcommittee

www.hbfunding.co.nz

Hawke's Bay Funding

Hawke's Bay Funding is a local service that lists all available funding opportunities across Hawke's Bay. There are many funding organisations around Hawke's Bay that support charitable organisations in their efforts to work with and strengthen our communities.

The search engine is powered by Generosity and lists available funding from local councils, community trusts, gaming trusts, national funding organisations and more.



Events & News

Hawke's Bay Funding Roadshows

We're thrilled to team up with local and national funders to bring you the Hawke's Bay Funding Roadshow.

There will be a wealth of great information about funding options and resources, expo stalls and opportunities to catch up with funders.

If you are a community organisation looking for funding to do some great community work, you won't want to miss this!

Upcoming Events:

HB Funding Roadshow - Havelock North

Wednesday, 8 June 2022 - 7am - 9am
Havelock North Function Centre, 30 Te Mata Road, Havelock North

[Register for the free event](#)

About this event

The roadshow aims to connect community and not-for-profit groups and organisations with funding opportunities available in the Hawke's Bay.

National and local community funding organisations have come together to host a Hawke's Bay Funding Roadshows across the Hawke's Bay.

This event is brought to you by Hastings District Council, Napier City Council and the Hawkes Bay Funders Forum

The roadshow, which is free to attend, aims to connect community and not-for-profit groups and organisations with funders who can provide information and advice about the funding opportunities available in the Napier and Hastings areas.



Hawke's Bay
FUNDING
NGĀ TUKUNGA PŪTEA Te Matau-a-Māui

Funding Roadshow

Wednesday 8th June 2022
7am-9am
Havelock North Function Centre
30 Te Mata Road, Havelock North
[Register at www.hbfunding.co.nz](#)

Brought to you by Hawke's Bay Funders Forum



What does your organisation have to share?

What does your organisation need?

What can the HBFF help with?

Hawke's Bay



FUNDING

NGĀ TUKUNGA PŪTEA Te Matau-a-Māui

Funding Roadshow

Hastings District Council

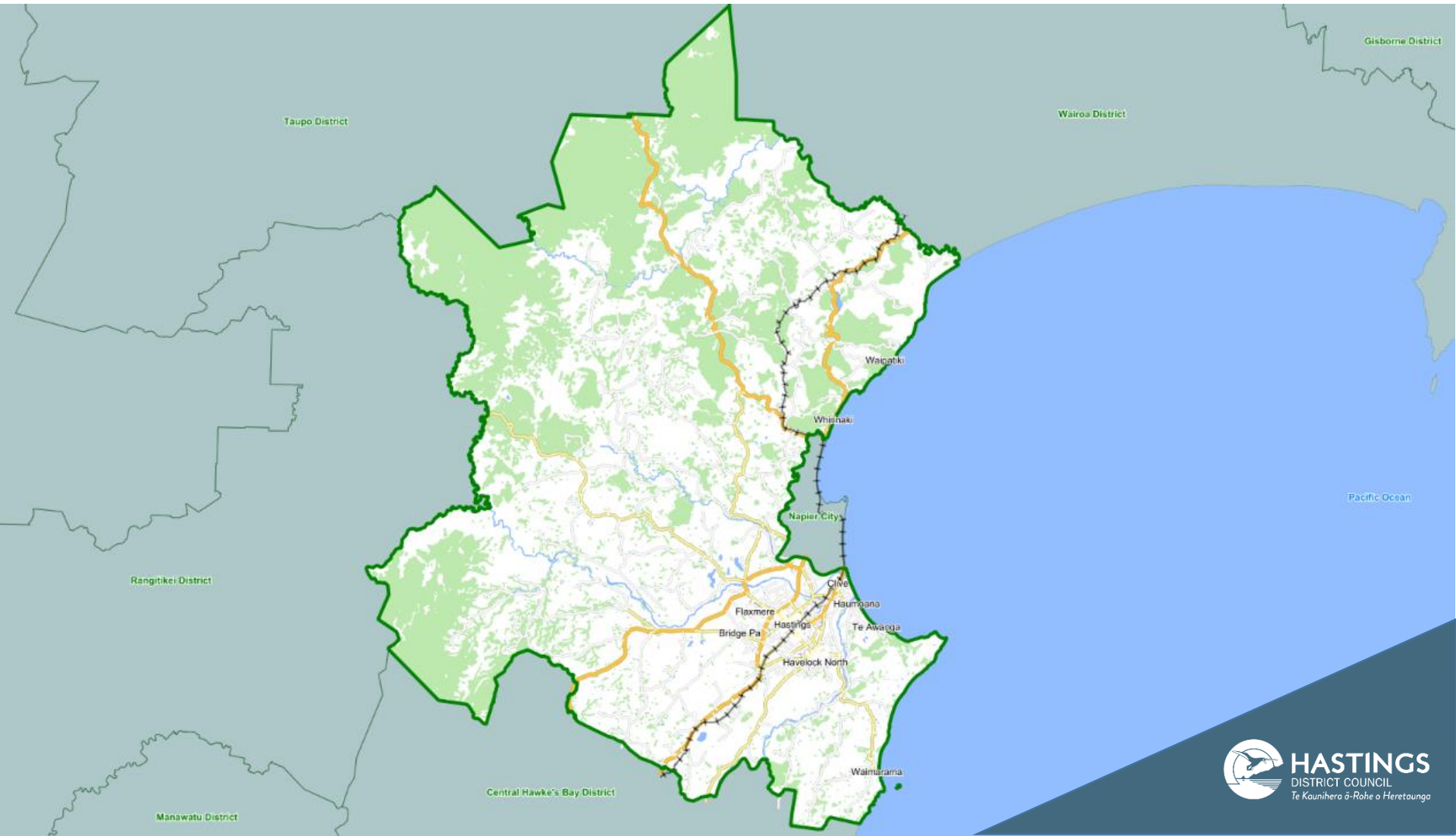
Grants & Funding Ngā tukunga pūtea

Kev Carter

Community Grants and Partnership Advisor

Grants & Funding Ngā tukunga pūtea

Hastings District Council Area



Grants & Funding

Ngā tukunga pūtea

Single Year Community Grant

Each year Council contributes funds to a diverse range of groups delivering community services or projects across the district. Organisations are able to apply for up to \$20,000 per year via the Single Year Community Grants for projects that provide innovative ways to help support the current and future needs of our communities.

To be eligible for funding, groups need to show how their project fits with one or more of the priorities below:

- Uplifting our communities' wellbeing by providing access to help and advice
- Fostering a sense of pride within our district and across our diverse communities
- Promoting happy, healthy and active communities.

Multi-year Strategic Community Partnership Fund

Groups that have previously been successful obtaining a Single Year Community Grant, and are providing a proven positive impact to the community, can apply to the Multi-year Strategic Community Partnership Fund.

Open March

Grants & Funding Ngā tukunga pūtea

Creative Communities Scheme

Creative Communities grants are available for small local arts projects. The funds are supplied by Creative NZ, projects are generally under \$3000.

Open February & August

Community Events Support Fund

The Community Events Support fund is available to not-for-profit groups holding community events in the district, generally these are free or low cost.

Open all year, assessed monthly

City Centre Vibrancy Fund

The City Centre Vibrancy Fund aims to support activities which improves peoples experience and enjoyment of the Hastings City Centre.

Open April & August

Grants & Funding

Ngā tukunga pūtea

Rural Halls Maintenance Fund

The Rural Halls Maintenance Fund assists rural communities with the maintenance, upgrading, and strengthening of halls.

Open April

Marae Development Fund

The Marae Development Fund assists with marae preservation and development, inline with the Marae Development Fund Policy.

Open August

Youth Grants

Funding is available for young people aged 15 to 19 to help to succeed in the areas of music, sport, arts, or education.

Open November

Annie Aranui Scholarships OPEN NOW

Up to \$5,000 to support mana
wāhine (17-24 years) in the workplace

For more information and to
apply for a Scholarship go to
www.hbyft.org.nz or contact
info@hbyft.org.nz



Waste Minimisation Contestable Fund

Small Monthly Fund

For applications under \$2000. February to November

Annual Large Fund

For applications over \$2000.

Total pool of \$20,000.

Applications open August - September



MAKE LANDFILL YOUR LAST CHOICE

**More information around
Grants and Funding can be
found on the website:**

www.hastingsdc.govt.nz/grants

Thank you

NAPIER CITY COUNCIL

COMMUNITY FUNDING

Belinda Mcleod
Community Funding Advisor



NAPIER
CITY COUNCIL
Te Kaunihera o Ahuriri

Types of Grants Available

Napier City Council administers five community grants;

Community Services Grant

This is a contestable grant for the not for profit sector to assist with operational costs (open April/May).

Community Development Grant

This is a discretionary grant for the not for profit sector, to assist with community projects (open all year round).

Types of Grants Available

Council Projects

This is a discretionary fund to contribute to the costs of community projects over \$30,000 (open all year round).

Youth Grants

This is a contestable fund for young people aged between 12 – 24, to help them in areas of Education and Employment, Leadership Development and Sport/Arts and Culture (open July).

Creative Communities

This is a contestable fund for art projects in our community, and is administered on behalf of Creative NZ (two funding rounds per annum August and February)



Full details of all these funds is available
on the Napier City Council website
www.napier.govt.nz keyword grants

Thank you

Department of Internal Affairs

Community grants

New Zealand Government



Te Tari Taiwhenua
Internal Affairs



Te Tari Taiwhenua
Internal Affairs

About us

We provide support and information about central government and Lottery funds available to community organisations and charities.

Funds on offer

Community Organisation Grants Scheme (COGS)

Provides grants to community-based social services that contribute to local outcomes:

- ongoing operational costs
- community projects or events.

Opening April 20, closing May 18

Funds on offer



Lottery Community Fund

Provides grants to help improve the quality of people's lives in the community:

- ongoing operational costs
- community projects or events
- minor capital works projects valued at \$30,000 or less
- community development costs, such as hui, training, planning, evaluation and facilitator fees.

Opening June 22, closing 20 July

Opening 2 November, closing 30 November

Funds on offer



Lottery Community Facilities Fund

Provides grants to improve or build community facilities and for studies to find out if a community facility is needed and can be achieved:

- e.g. stadiums, community swimming pools, skate parks, playgrounds, community halls and performing arts complexes.

Opening July 13, closing September 7

Opening January 4, closing March 1

Funds on offer



Lottery Environment and Heritage Fund

Provides grants for plans, reports and one-off projects that preserve, restore and protect NZ's natural, physical and cultural heritage e.g.:

- restoring habitats and ecosystems for our native plants and animals
- restoring places and structures of significance to our history
- protecting cultural collections.

Opening 8 June, closing 3 August

Opening January 4, closing March 1

Funds on offer



Oranga Marae

Provides grants for the physical and cultural revitalisation of marae as centres of Māori identity and mātauranga. The fund is provided by Te Puni Kōkiri and the Department. Grants are for:

- Marae development planning
- Technical or feasibility reports
- Implementation of cultural or capital works on the marae.
- MDP always open
- TFS Closes July 6, December 7, April 4
- MDI Closes July 27, October 12, February 8, April 26

Funds on offer



Lottery Minister's Discretionary Fund

In addition to considering requests for projects that fall outside the scope of other Lottery Funds, there are four priorities that are only available through the Fund:

- Overseas travel
- Volunteer fire-fighting services for projects
- Animal welfare projects
- Training for financial planning and/or good governance (which includes an emphasis on support for children's organisations).

Always open

Application tips

- Talk to an advisor if you have any questions about eligibility or the application process.
- Keep applications clear and concise – use bullet points.

Website

www.communitymatters.govt.nz

Community Advisors

Mary.Wilson@dia.govt.nz

027 382 9726

Monteata.Lafou@dia.govt.nz

027 214 4294

Norman.Apirana@dia.govt.nz

027 205 2705

Our community.
Our future.
Our responsibility.

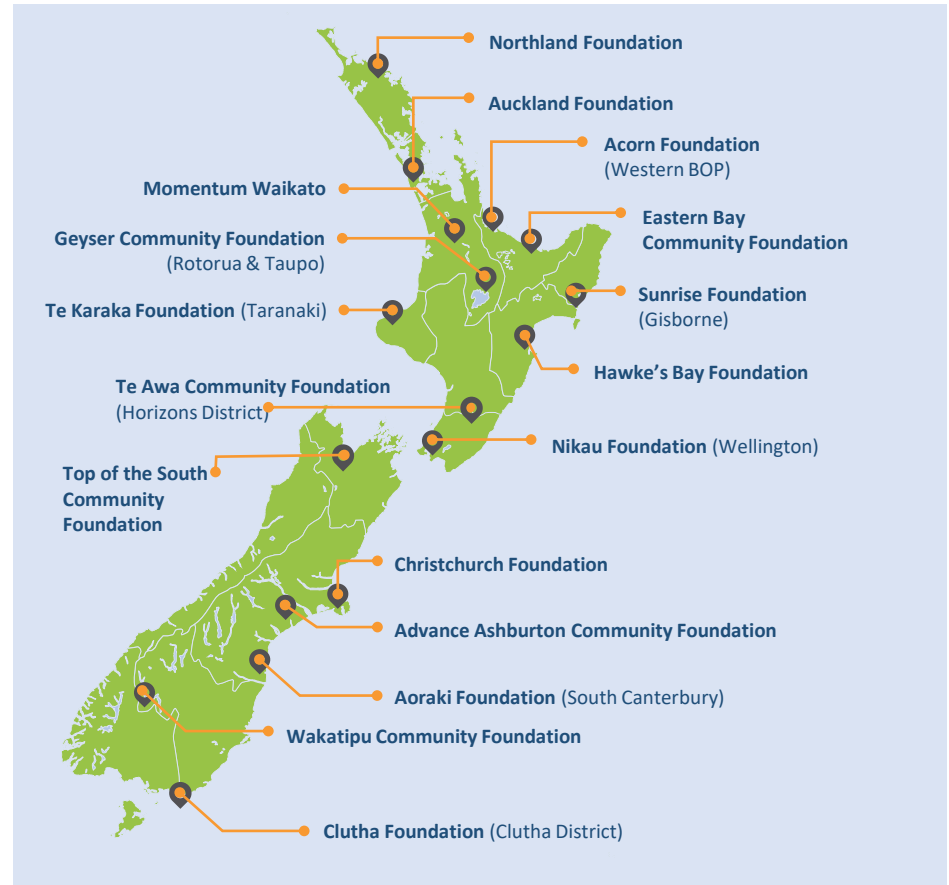
**LIVE
HERE
GIVE
HERE**



HAWKE'S BAY
FOUNDATION

A GROWING MOVEMENT

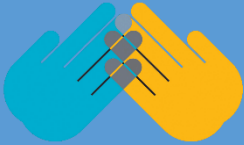
- The fastest growing form of philanthropy in the world
- 17 Community Foundations across NZ
- We've been growing as a network in NZ since 2003



What does Hawke's Bay Foundation do?

- In a nutshell: we invest donations from locals, and distribute the income gained to local charities, via a grants round, or according to the Donor's wishes.
- In 2021 we gave over \$160,000 to 53 Hawke's Bay charities.
- We aim to provide long-term funding to all Hawke's Bay charities.
- We currently have \$6.2 million in our Fund, with the equivalent promised in bequests.
- We have 10 members on our voluntary Board, and 3 part-time staff members.





HAWKE'S BAY FOUNDATION



Your gift



is invested
and grown



and the
ongoing income
earned



goes to the
local causes
you love.

How to apply for funding

- Follow us on Facebook or sign up for our newsletter via our website – you'll be alerted when the funding round opens
- Funding round opens in early May
- Distributions are made in October
- You must be a **registered charity**, with the bulk of your work benefitting the Hawke's Bay community



Why set up a Community Group Fund?

- After seeding your Fund with at least \$25,000, you will begin receiving annual income payments of 4% of the fund's gains.
- **Relax**, knowing the capital – the donations – can never be touched.
- Anyone can add to the fund at any time. All donations over \$5 are eligible for the 33% tax credit.
- We do all the administrative work. There is no need to set up a separate charitable entity or file any returns.
- We will also provide marketing materials for you to promote the fund and will actively encourage both of our donor networks to donate.



EPIC Ministries Fund

- EPIC decided to open a Community Group Fund with Hawke's Bay Foundation
- They approached their donor community, and were very surprised and pleased when a long-standing supporter of EPIC gave \$50,000 to seed their new Fund
- We are working with EPIC to continue to market their new Fund
- They will receive a guaranteed distribution from their Fund annually



Ngā mihi nui ki a koutou
Thank you



Tū Manawa Active Aotearoa



Purpose of the fund

- The purpose of Tū Manawa is to provide quality experiences that are accessible, create a life-long love of being active and meet the needs of tamariki and rangatahi.
- The fund enables organisations to provide quality experiences in play, active recreation and sport for tamariki (children aged 5-11) and rangatahi (young people aged 12-18), particularly those for whom barriers cause them to be less active.

Hawke's Bay funding rounds

- Within Hawke's Bay we have \$680,000 available to distribute per year. The distribution of these funds are split over the following rounds.
 - Fast Fund – Bi-monthly round (max. \$10,000)
 - Full Fund – Bi-annual round (max. \$40,000)
 - Play Activation Fund – one-off round in October 2022
 - Secondary School Activation fund – one-off round in March 2023

What makes a good application

STRONG voice of the participant

Project description

Clear budget breakdown

How to apply

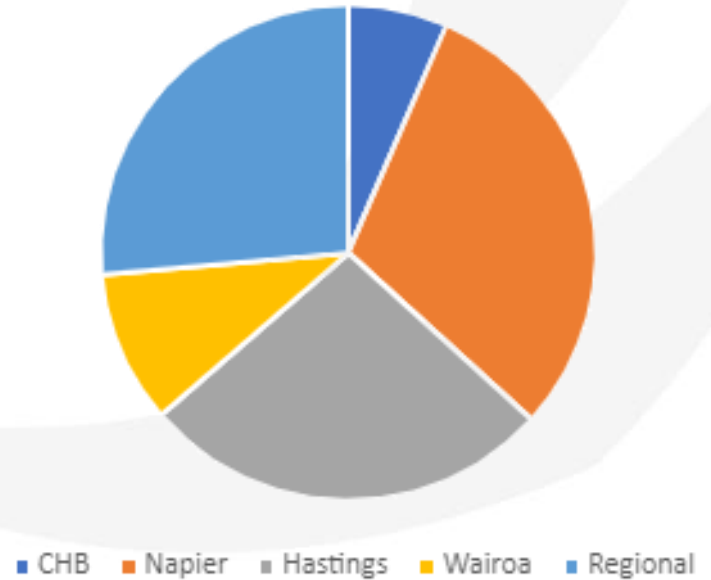
- **Talk to us**
- www.sporthb.co.nz
 - *Funding tab*
- Contract between Sport Hawke's Bay and Successful Applicant
- 12 months to spend funds
- Online report

Year 2 of Tū Manawa

Activity



Region



SPORT

HAWKE'S BAY

KIA KAHA, KIA ORA | BE ACTIVE, BE WELL

Kate Benny

Community Partnerships Advisor

kateb@sporthb.net.nz

Ryan Hambleton

General Manager

ryanh@sporthb.net.nz



Papakāinga, Cadetships and Te Pū Harakeke.

Our Vision

**Thriving Whānau: When whānau
are thriving, so do their
communities, hapū, iwi and all of
Aotearoa**

Papakāinga: is a collective of homes on ancestral whenua where whānau live independently in their own whare but collectively operate their papakāinga.

*Hurunui-o-Rangi
Papakāinga.
Gladstone,
Wairarapa*



*PukeAute Papakāinga –
Te Hauke*



*Aunty's Māra kai -
2022*



*Ātea a Rangi Star
compass - Matariki*



*Sponsorship –
support Māori events*

Te Pū Harakeke
Fund: is a fund to support Māori to host community projects and events, including Matariki and developing Māra Kai and sponsorship.



Cadetship programme: is to support Māori cadets to become highly skilled in their industry, through qualifications, knowledge, cultural awareness and employability of the cadet.



*Sheeran Associates
LTD – Cadets
learning Te Reo
Māori*



*Hawkes Bay Rangatahi – at the third
Au.E1 Event held at the PGA.*

Rangatahi Manawaroa: This fund invests in initiatives delivered in a Te Ao Māori setting for rangatahi aged 10-24 years old. To increase knowledge and skills to build their wellbeing, resilience and leadership to deal with challenging life situations.



Who are we?

- Not Royston Hospital
- Charitable trust with a focus on the health and wellbeing of Hawkes Bay people



What do we do?

➤ Annual donations round

- By application (Mar/Apr)
- Maximum donation of \$20,000 pa
- Must demonstrate meeting of a health need

➤ Project/partnership funding

- By engagement with applicant, invitation to apply, due diligence, follow through, reporting
- Health initiatives
- Capital projects
- Research projects





Eastern & Central COMMUNITY TRUST

**Hawke's Bay
Funding Roadshow**

How we create value for our communities

Eastern & Central
COMMUNITY TRUST

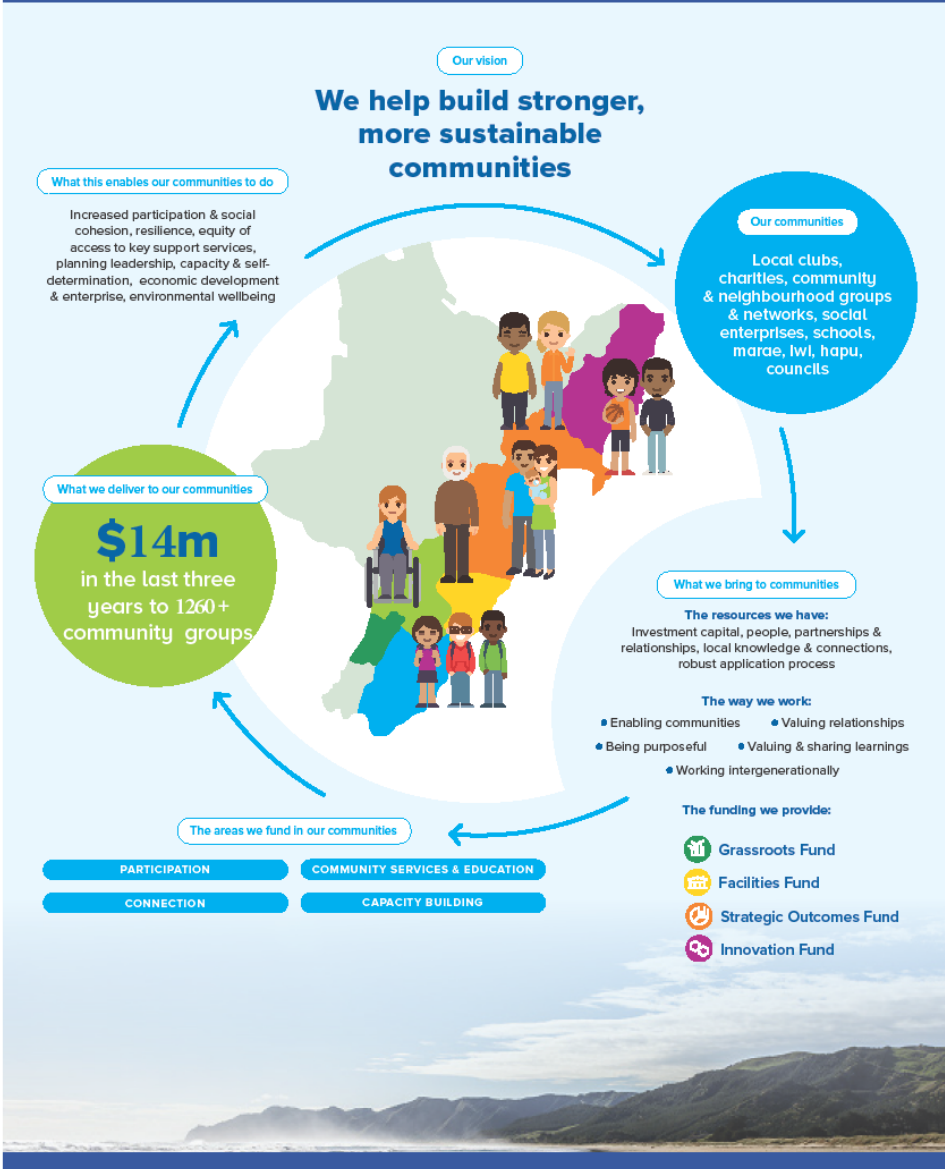
Who we are...

★ 9 Trustees, 6 staff

★ Last year:

\$4.2M in ECCT regions

\$1.6M in Hawke's Bay



What we do...

1. Grassroots Fund – people can access a range of activities, services, events and initiatives in their community

Participation

Community
Services &
Education

Connection

Capacity
Building

For example:

	\$1,000-\$4,000	Local events, festivals, celebrations
	\$1,000-\$5,000	Operating costs, programme delivery, coaching, mentoring, support workers, wages, salary, equipment, uniforms, H&S, shelters, power, rent, insurance, phone, etc.
costs &	\$8,000-\$15,000	Youth development programmes, community economic development, operating volunteer capacity development.
	\$10,000-\$25,000	Vans, astro turf, flood lights, office renovations, pool upgrade, playground
	\$20,000-\$50,000	New roof, large building upgrades, kitchen & dining facilities, outdoor areas, Whaikairo, Tukutuku, etc.

What we do...

2. Community Assets & Facilities Fund – people can access a fit-for purpose community facilities.

Participation

Community Services & Education

Connection

Grants of up to \$250K (GST Excl)

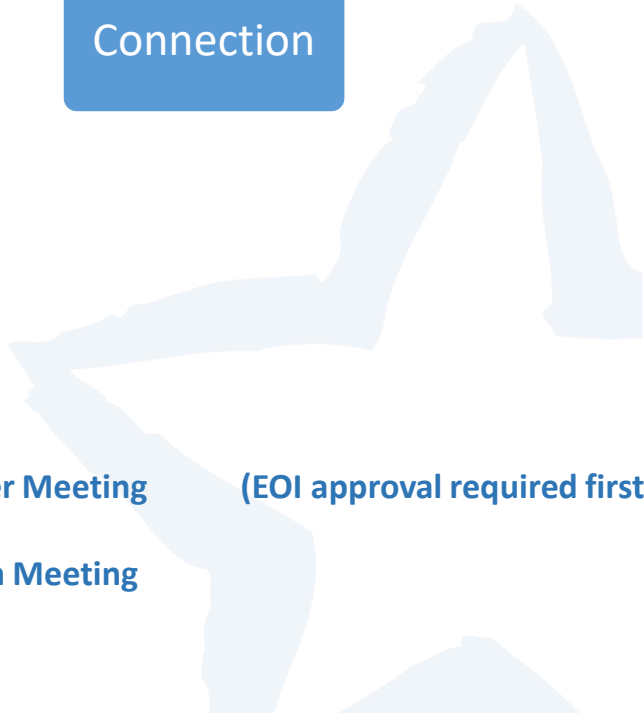
Projects with a Total Cost Over \$300K (GST excl)

Come & speak with us early

Capital Works Closing dates:

31 July for a September Meeting (EOI approval required first)

31 January for a March Meeting



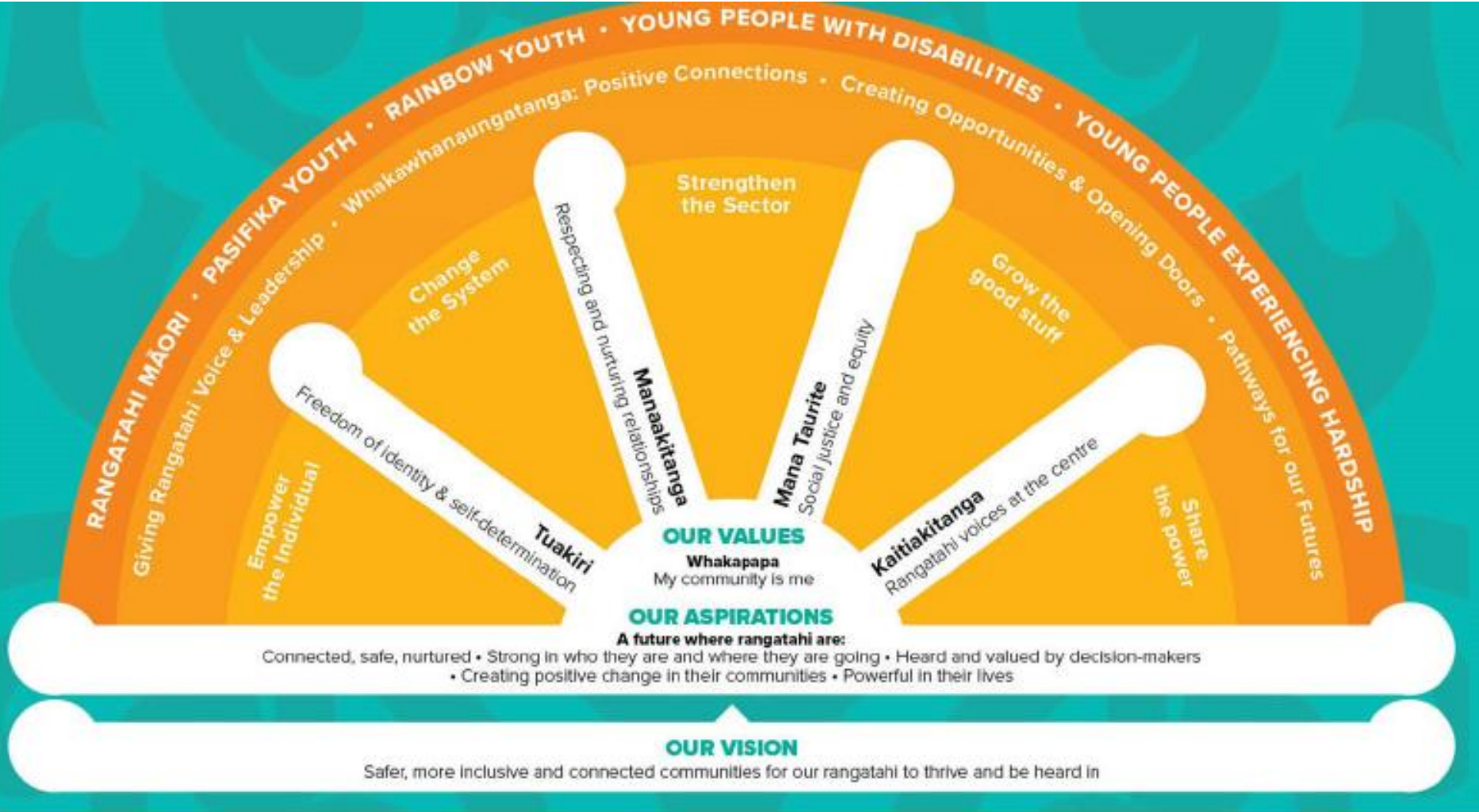
What we do...

3. Strategic Funding – funding for proven initiatives that deliver results in ECCT’s Strategic Focus areas, based on a cohesive strategy or action plan.

Focus Area: Children & Young People

- Co-design of a Rangatahi Action Plan
- \$4M over 4 years from 1 April 2022





www.ecct.org/tirarangatahi

[@TiraRangatahi](https://www.instagram.com/TiraRangatahi)

rangatahi@ecct.org.nz

TiraRangatahi
@TiraRangatahi - Youth Organization

Send message
Hi! Please let us know how we can help.

Home Reviews Videos Photos More

Like

About See all

We are TiraRangatahi, a rangatahi rōpū who work in partnership with Eastern & Central Community Trust. We have created a Rangatahi Action Plan with o... See more

367 people like this

420 people follow this

<https://ecct.org.nz/tirarangatahi/>

Very responsive to messages

Send message

rangatahi@ecct.org.nz

Youth Organization

Photos See all

Videos See all

Create post

Photo/video Check in Tag friends

Pinned post

TiraRangatahi is feeling excited.
May 11 at 10:00 AM

ATTENTION ALL RANGATAHI

Did you know its youth week?
Well if you didnt, now you do! and we wanna celebrate it with you

In cal... See more

You and 45 others 29 Shares

Love Comment Share

Most relevant

Write a comment...

Other posts



Eastern & Central COMMUNITY TRUST

Rose Artemiev

Community Advisor

Email: rose@ecct.org.nz

Freephone: 0800 878 720

www.ecct.org.nz

NfP Law

Mark von Dadelszen

Barrister

New Incorporated Societies Act

www.nfplaw.co.nz

Hawke's Bay



FUNDING

NGĀ TUKUNGA PŪTEA Te Matau-a-Māui

Funding Roadshow

What does your organisation have to share?

What does your organisation need?

What can the HBFF help with?

Hawke's Bay



FUNDING

NGĀ TUKUNGA PŪTEA Te Matau-a-Māui

Funding Roadshow
