

**Hawke's Bay**



**FUNDING**

NGĀ TUKUNGA PŪTEA Te Matau-a-Māui

**Funding Roadshow**

---

# Opening Karakia

Tūtawa mai i runga

Tūtawa mai i raro

Tūtawa mai i roto

Tūtawa mai i waho

Kia Tau ai te Mauri tu

Te Mauri Ora ki te katoa

Hāumi e, hui e, Tāiki e

I summon from above

I summon from below

I summon from within

And the surrounding environment

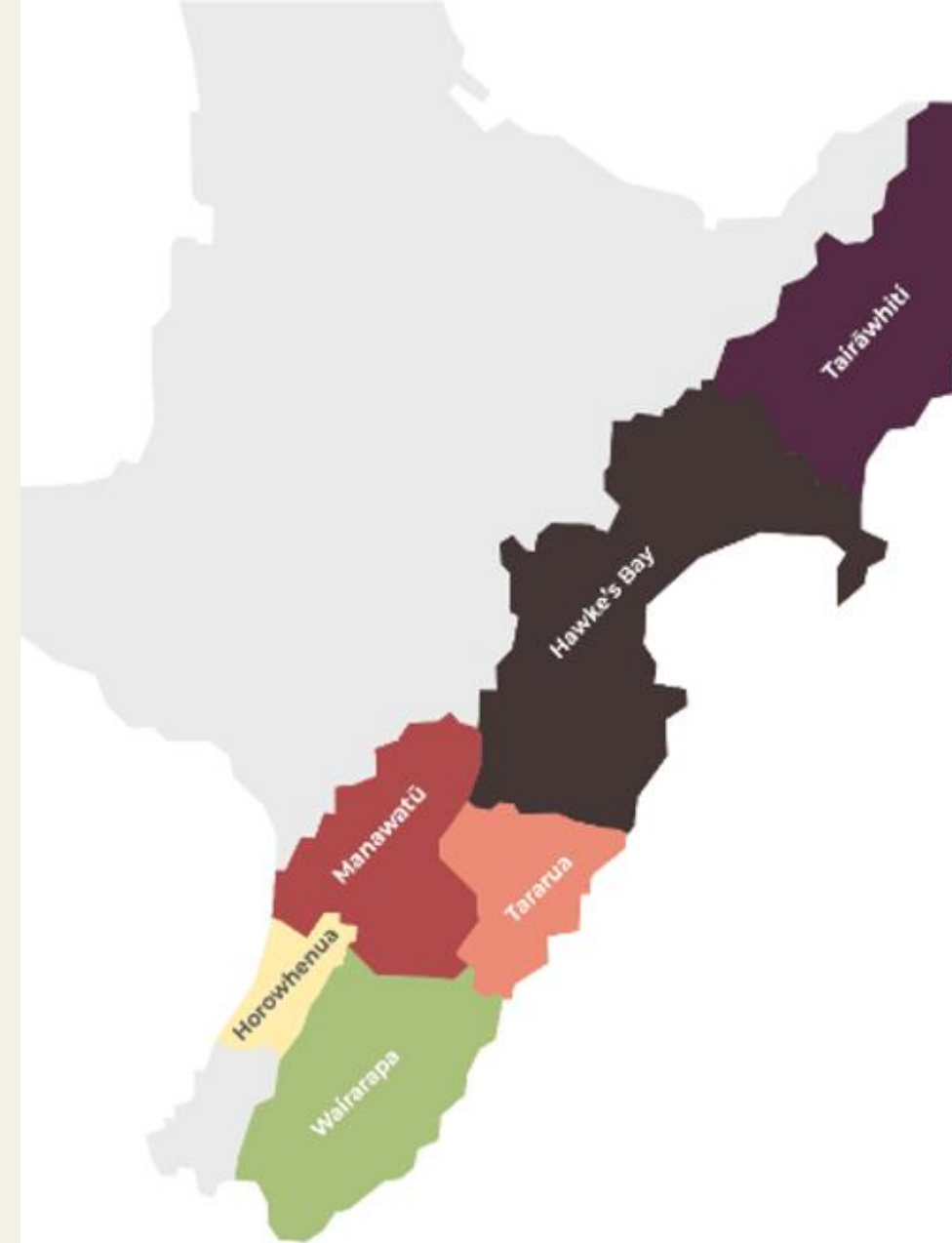
The universal vitality and energy to infuse

and enrich all present

Enrich, unify us as one

# Eastern & Central Community Trust

- Providing grants and support to community organisations operating in Hawke's Bay, Manawatū, Tararua, Tairāwhiti, Horowhenua and the Wairarapa districts over the past 35 years. \$6.8M to community groups across our six regions in 2022/23.
- New Strategic Plan launched in 2023. Funding framework coming in early 2024.
- OUR VISION: *To accelerate courageous transformational change, that creates vibrant, more sustainable and equitable communities.*
- A shift from transactional to transformation funding with a focus on priority communities and alignment with our pillars.
- No longer working in a silo – an emphasis on partnerships to enable this transformation change across our six regions.



# Available Funding

- Community Asset & Facilities Fund - on hold since July 2023
- Grassroots Fund – Applications must align with one or more of our Priority Communities and/or Pillars

## Ngā Hapori Mātua | Priority Communities

- Māori & Pasifika
- Tamariki and rangatahi
- People living with diverse abilities, rurally or in isolation
- Communities or individuals facing hardship
- High deprivation areas, suburbs & communities across our region, notably: – Tairāwhiti, North Hawke's Bay / Wairoa, Horowhenua

## Pou | Pillars

- Tū Māori Mai
- Kaitiakitanga | Environment
- Healthy, secure & affordable housing
- Mana Taurite | Equity
- Hononga | Partnerships

4

# Contact Information

**Kotahi te aho ka whati;  
ki te kāpuia e kore e whati**

**One strand of flax is easy to break,  
but many strands together will stand strong.**



**Phone 0800 878 720**



**Email [info@ecct.org.nz](mailto:info@ecct.org.nz)**



**Website [www.ecct.org.nz](http://www.ecct.org.nz)**



**Questions or enquiries**

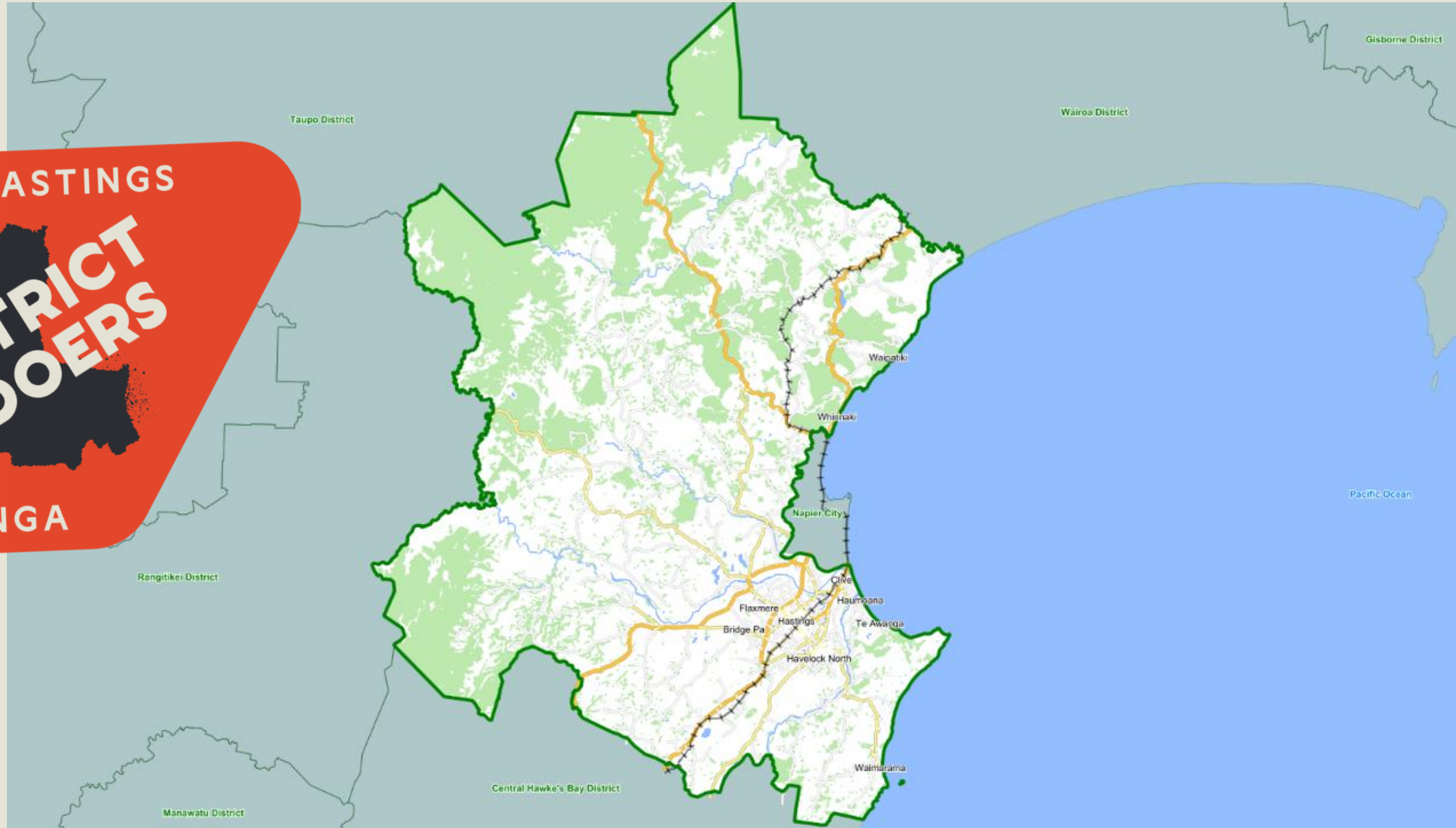
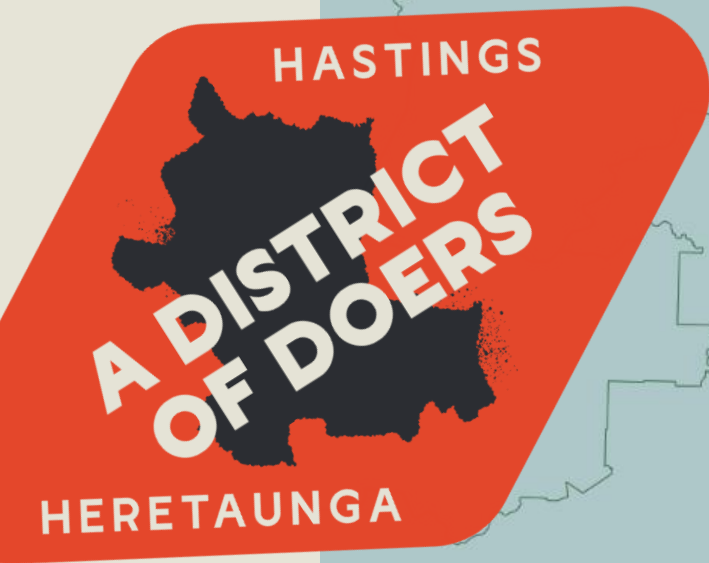




**NGĀ TUKUNGA PŪTEA  
GRANTS & FUNDING**

**KEV CARTER**  
Hastings District Council  
Community Grants and Partnership Advisor





## Single-Year Community Grant

Each year Council contributes funds to a diverse range of groups delivering community services or projects across the district. Organisations are able to apply for up to \$20,000 per year for projects that provide innovative ways to help support the current and future needs of our communities.

Groups need to show how their project fits with one or more of the priorities below:

- Uplifting our communities' wellbeing by providing access to help and advice
- Fostering a sense of pride within our district and across our diverse communities
- Promoting happy, healthy and active communities.

**Opening March 2024**

## Multi-year Strategic Community Partnership Fund

Groups that have previously been successful in obtaining a Single Year Community Grant and are providing a proven positive impact to the community, can apply to the Multi-year Fund.

**Opening February 2024**



## Creative Communities Scheme

Creative Communities grants are available for small local arts projects. The funds are supplied by Creative NZ, projects are generally under \$3000.

**Opening February & August 2024**

## City Centre Vibrancy Fund

The City Centre Vibrancy Fund aims to support activities which improves people's experience and enjoyment of the Hastings City Centre.

**Opening April & October 2024**

## Events Support Fund

The Event Support Fund is available to organisations planning events that are in line with Event Strategy and the Toi-Tū Arts and Culture Framework.

- *Large events that are of regional and national significance*
- *Community-led local events that are low-cost or free to access*

**Opening July 2024**



## Rural Halls Maintenance Fund

The Rural Halls Maintenance Fund assists rural communities with the maintenance, upgrading, and strengthening of halls.

**Opening April 2024 (currently being reviewed)**

## Marae Development Fund

The Marae Development Fund assists with marae preservation and development, inline with the Marae Development Fund Policy.

**Closed (currently being reviewed)**

## Youth Grants

Funding is available for young people aged 15 to 19 to help to succeed in the areas of music, sport, arts, or education.

**Closed (currently being reviewed)**



## Waste Minimisation Contestable Fund

The Waste Minimisation Fund supports development of innovative solutions for reducing waste that contribute to achieving the goals outlined in Hastings District Council's Waste Minimisation and Management Plan 2018.

### Small monthly fund

For applications under \$2000.

**Open, assessed monthly**

### Annual large fund

For applications over \$2000.

**Closed (currently being reviewed)**





# Thank you

For more information about grants and funding  
visit: [www.hastingsdc.govt.nz/grants](http://www.hastingsdc.govt.nz/grants)

Email me: [communitygrants@hdc.govt.nz](mailto:communitygrants@hdc.govt.nz)

**HERETAUNGA  
HASTINGS** A DISTRICT  
OF DOERS



# NAPIER CITY COUNCIL

## *COMMUNITY FUNDING*

*Belinda Mcleod*  
*Community Funding Advisor*



# NAPIER CITY COUNCIL Community Grants

*Community Services Grant*  
*Community Development Grant*  
*Council Projects*  
*Youth Development Grant*  
*Creative Communities*

<https://www.napier.govt.nz/grants>

(Search community funding)



# Funding Presentation

Mary Wilson  
Community Advisor

New Zealand Government



Te Tari Taiwhenua  
Internal Affairs



Te Tari Taiwhenua  
Internal Affairs

# Community Operations - *Hāpai Hapori*

To build strong sustainable communities,  
hapū and iwi and New Zealand.

Support Iwi, Hapū and Community to build  
connection, innovation and empower people  
to create positive change in their  
communities.

**16 Office locations – Napier - HB**

# Community Advisory

*Most community groups know what they want to do. They just don't know.....*

***How To? ....., Who To?....., Where To?...***

Community Advisors - Broker and Facilitate:

Information, Networks, Relationships and  
Resources (incl. Funding)

To assist Iwi, Hapū and Communities to achieve  
THEIR goals and aspirations.

# Groups need to demonstrate:

- ✓ **RULES / CONSTITUTION:** Companies / Charities / (> \$10k)
- ✓ **GOOD GOVERNANCE:** Committee / Trustees, AGM / Meeting Minutes
- ✓ **GOOD FINANCIAL MANAGEMENT:**
  - ✓ Annual Financial Accounts – under 18 months
- ✓ **APPROVED ONLINE USERS:** (2 or 3) – REALME logon
- ✓ **BANK ACC. NO.:** Consistent with Organisation Name (Deposit Slip / Statement)
- ✓ **PROJECT / PROGRAMME SCOPE:** – Community / Public Benefit, Outcome(s)
- ✓ **BUDGET:** Project / Programme



# Community Organisations Grants Scheme (COGS)

*Provides grants to non-profit organisations delivering community-based social services that contribute to achieving locally-determined outcomes.*

- *Funding Round is **once a year***
  - *Opens April      Closes May      Decision Meetings: July*

## **DO** Fund:

- *Community Activities / Programmes, Operating costs*
  - *E.g. Overhead costs, Kaumatua Programmes.*

## **DO NOT** Fund

- *Capital Items*
- *Duplication of Existing Services*



**Te Tari Taiwhenua**  
**Internal Affairs**

# Lottery Community

- ✓ not-for-profit organisations with a community or social service focus
- ✓ ongoing operating costs or projects
- ✓ which help improve the quality of people's lives in their communities

*TWO funding rounds per year - closing dates: July & Nov*

- **Currently OPEN – closes 22 Nov 2024**

## **Hawkes Bay - Regional Committee**

- ✓ National funding priorities
- ✓ HB Committee funding priorities



# Further Information

## Some other funds:

- Lottery Environment & Heritage
- Lottery Community Facilities
- Oranga Mārae
- Ethnic Communities Development Fund

## ALL FUND INFORMATION:

- [www.communitymatters.govt.nz](http://www.communitymatters.govt.nz)
- [www.dia.govt.nz](http://www.dia.govt.nz)



# Tū Manawa Active Aotearoa

# Purpose of the fund

- The purpose of Tū Manawa is to provide quality experiences that are accessible, create a life-long love of being active and meet the needs of tamariki and rangatahi.
- The fund enables organisations to provide quality experiences in play, active recreation and sport for tamariki (children aged 5-11) and rangatahi (young people aged 12-18), particularly those for whom barriers cause them to be less active.



# Hawke's Bay funding rounds

- Within Hawke's Bay we have \$680,000 available to distribute per year. The distribution of these funds are split over the following rounds.
  - Fast Fund – Bi-monthly round (max. \$10,000)
  - Full Fund – Bi-annual round (max. \$40,000)
  - Play Activation Fund – one-off round in October 2022
  - Secondary School Activation fund – one-off round in March 2023





# SPORT

## HAWKE'S BAY

KIA KAHA, KIA ORA | BE ACTIVE, BE WELL

**Kelly Sim**

**Community Partnerships Advisor**

**[kellys@sporthb.net.nz](mailto:kellys@sporthb.net.nz)**

**Ryan Hambleton**

**General Manager**

**[ryanh@sporthb.net.nz](mailto:ryanh@sporthb.net.nz)**



Te Puni Kōkiri  
MINISTRY OF MĀORI DEVELOPMENT

Te Kāwanatanga o Aotearoa

## Papakāinga & Cadetships

---

### **Our Vision**

**Thriving Whānau: When whānau are thriving, so do their communities, hapū, iwi and all of Aotearoa**

## Housing solutions for whānau via 3 kaupapa:

1. **Sorted Kāinga Ora** - whānau/individual financial capability building
2. **Māori Infrastructure Fund** - infrastructure only for 1 to 2 homes on ancestral whenua
3. **Papakāinga** – infrastructure and construction support for 3 to 10 homes on ancestral whenua



*Hurunui-o-Rangi Papakāinga, Gladstone, Wairarapa*

**Papakāinga:** is a collective of homes on ancestral whenua where whānau live independently in their own whare but collectively operate their papakāinga.



*Puke Aute Papakāinga, Te Hauke*





**Cadetships:** Te Puni Kōkiri Cadetships programme was established to support kaitono (employers) to develop, mentor and train their permanent Māori staff at all career stages into higher-skilled roles.



*Solidcrete HB Limited cadets from their most recent programme*



*Te Aratika Training Academy cadets learning mau rākau as part of the cadetship programme*



*Prestige Limited with some of the cadets that recently went through Nohi Wellbeing digital tool*



Our community.  
Our future.  
Our responsibility.

**LIVE  
HERE  
GIVE  
HERE**



HAWKE'S BAY  
FOUNDATION

**Te Whatu Ora**  
Health New Zealand



**Te Kāwanatanga o Aotearoa**  
New Zealand Government

# Community Wellbeing Grants

<https://vimeo.com/882660439>



**Stuart Signal**  
**[www.roystonhealthtrust.co.nz](http://www.roystonhealthtrust.co.nz)**



# Who are we?

- Not Royston Hospital
- Charitable trust with a focus on the health and wellbeing of Hawke's Bay people



[www.roystonhealthtrust.co.nz](http://www.roystonhealthtrust.co.nz)

# What do we do?

## ➤ Annual donations round

- By application (Mar/Apr)
- Maximum donation of \$25,000 pa
- Must demonstrate meeting of a health need

## ➤ Project/partnership funding

- By engagement with applicant, invitation to apply, due diligence, follow through, reporting
- Health initiatives
- Capital projects
- Research projects
- Health education



[www.roystonhealthtrust.co.nz](http://www.roystonhealthtrust.co.nz)



# First Light Foundation



# THE EVERGREEN FOUNDATION

---

HAWKE'S BAY FUNDERS FORUM,  
NETWORKING EVENT

# WHO WE ARE

”

We are the charitable arm of the Tumu Group - supporting education and relief of hardship.

---

The Evergreen Foundation is a Hawke's Bay based charitable organisation.

We are a nimble, action-oriented foundation that supports community and schools .

We focus on the areas throughout NZ that Tumu does business.



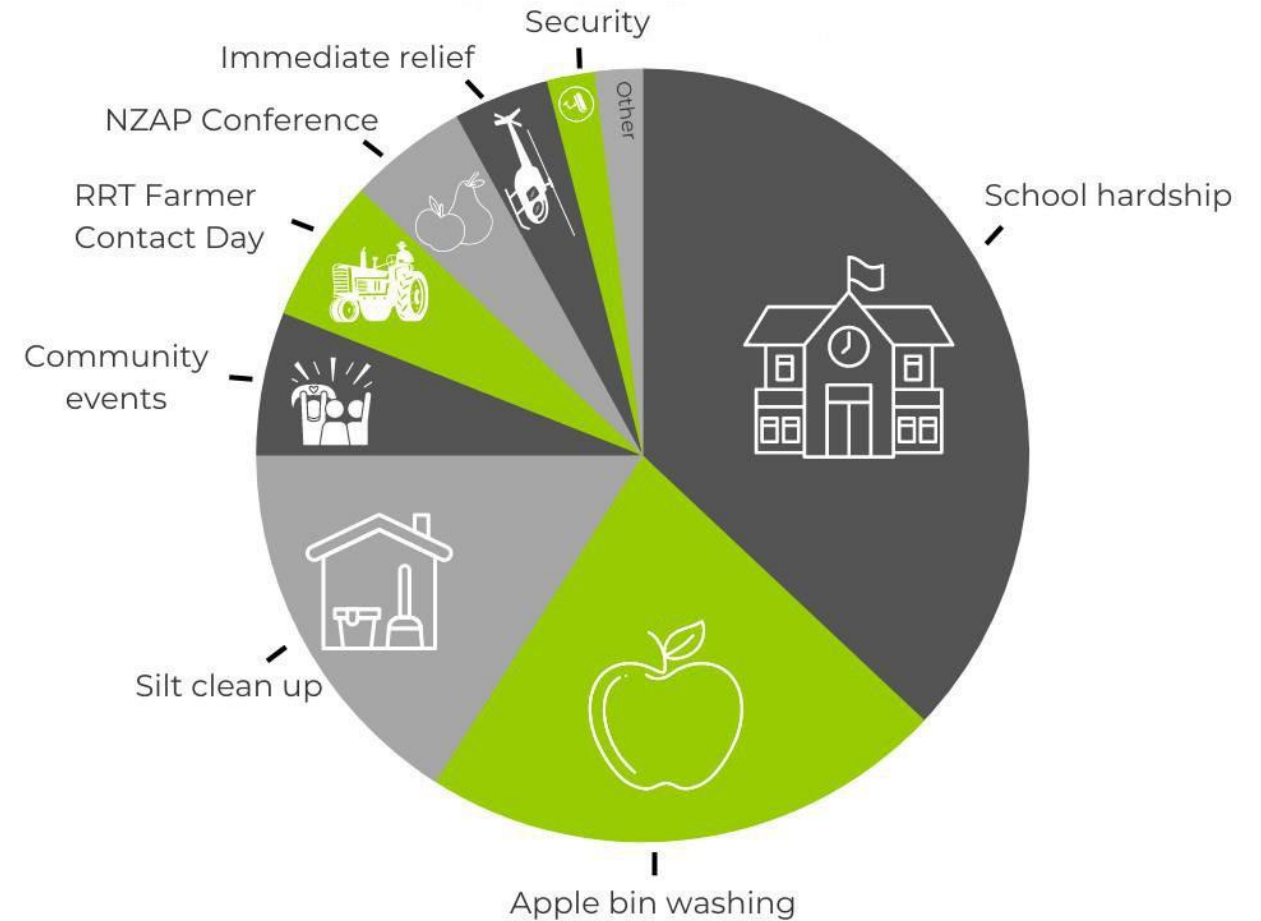
# WHAT WE DO

## Evergreen Cyclone Relief Fund

- fund of 2.9M
- distributed 2.6M

Our key initiatives to date:

- Silt Removal: Hawkes Bay Clean Up
- Neela Neela Thai Kitchen - 120,000 meals
- Bin Sanitisation Project - 30,000 bins
- Funding for Rural schools & students
- Rural community events to support wellbeing





# HOW WE CAN HELP

Evergreen welcomes funding requests from community groups for initiatives and events that support our flood affected rural communities on the East Coast.



---

## Conduit for Community Fundraising

We can connect cause with funder

---

## Scholarships for Education

We work closely with Hawke's Bay Boarding Schools to ensure rural family's can access education for their children

---

## Back Community Groups

We back community initiatives that show a clear idea of goals & deliverables that support rural hardship/ cyclone relief

---

## Fortnightly funding cycles

Evergreen Foundation Trustees & Grants Committee meet fortnightly to review applications.

**THE**  
**EVERGREEN**  
**FOUNDATION**

---

[EVERGREENFOUNDATION.ORG.NZ](http://EVERGREENFOUNDATION.ORG.NZ)

[ENQUIRIES@EVERGREENFOUNDATION.ORG.NZ](mailto:ENQUIRIES@EVERGREENFOUNDATION.ORG.NZ)

# Closing Karakia

Kii tau te rangimārie  
Ki runga i ngā iwi katoa o Ahuriri  
Kia piki te ora, te kaha me te māramatanga i ngā wā katoa  
Tihei mauri ora!

Let the peace reign  
On all our residences of Ahuriri  
Let us be well, be strong and patient for all time  
Let there be life